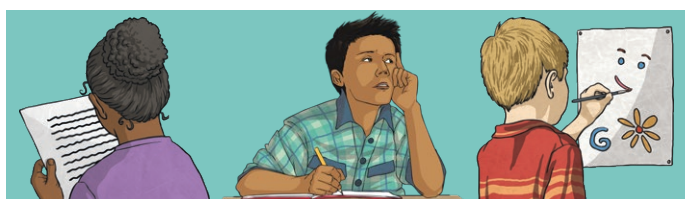


Living in the Wider World - One World

PSHE & Citizenship | LKS2 | Planning Overview

About the Topic

This unit is based on a case study of a fictional girl called Chiwa, who lives in Malawi. The children will explore different aspects of her life in each lesson. It is inspired by the idea that people's life experiences and opportunities differ throughout the world and that our actions can have both positive and harmful effects on people living in different countries. It aims to enable the children to explore the concepts of inequality and stereotypes and encourages them to reflect on what they can do to help make the world a fairer place. In this unit, children also learn about climate change and its effects, fair trading practices and organisations that help people like Chiwa. They will also learn about how to be a good global citizen.



Home Learning

If I Could Change the World: In this activity, the children will write about how they would change the world to make it a fairer place for all people.

Combatting Climate Change: In this activity, the children carry out independent research into what climate change is. They also write some top tips for what can be done at home to reduce the harmful effects of global warming.



Wider Learning:

Use a school linking programme if your school has an established one or look into developing one if not.

Assessment Statements

All children should be able to...

- describe similarities and differences between people's lives.
- identify opinions that are different from their own.
- express their own opinions.
- recognise that their actions impact on people in different countries.
- know what climate change is.
- know there are organisations working to help people in challenging situations in other communities.

Most children will be able to...

- give reasons for similarities and differences between people's lives.
- detail if they feel something is fair or not.
- give reasons for their own opinions.
- recognise how their actions impact on people in different countries.
- discuss climate change in terms of what it is and its effects.
- explain how organisations help people in need.

Some children will be able to...

- explain in detail why similarities and differences between people's lives arise.
- reflect on ways in which we can tackle inequality.
- make considered decisions based on all opinions.
- detail to others what actions can be taken to make the world a fairer place.
- describe what can be done to reduce the effects of climate change.

This resource is fully in line with the Learning Outcomes and Core Themes outlined in the PSHE Association [Programme of Study](#).

1. Chiwa and Kwende

R32. about respecting the differences and similarities between people and recognising what they have in common with others e.g. physically, in personality or background

L8. about diversity: what it means; the benefits of living in a diverse community; about valuing diversity within communities

L9. about stereotypes; how they can negatively influence behaviours and attitudes towards others; strategies for challenging stereotypes

I can discuss ways in which people's lives are similar and different and give reasons for these differences.



2. Chiwa's Dilemma 1

R34. how to discuss and debate topical issues, respect other people's point of view and constructively challenge those they disagree with

L2. to recognise there are human rights, that are there to protect everyone

L9. about stereotypes; how they can negatively influence behaviours and attitudes towards others; strategies for challenging stereotypes

I can explore differences of opinion and identify if I feel these are fair.



3. Chiwa's Dilemma 2

R34. how to discuss and debate topical issues, respect other people's point of view and constructively challenge those they disagree with

L2. to recognise there are human rights, that are there to protect everyone

L8. about diversity: what it means; the benefits of living in a diverse community; about valuing diversity within communities

I can think about the lives of people living in other places, make considered decisions and give reasons for my opinions.

- Large pieces of paper and marker pens - one set per group



4. Chiwa's Sugar

L2. to recognise there are human rights, that are there to protect everyone

L4. the importance of having compassion towards others; shared responsibilities we all have for caring for other people and living things; how to show care and concern for others

L8. about diversity: what it means; the benefits of living in a diverse community; about valuing diversity within communities

L19. that people's spending decisions can affect others and the environment (e.g. Fair trade, buying single-use plastics, or giving to charity)

I can recognise how my actions impact on people living in different countries and can identify things I can do to make the world a fairer place.



This resource is fully in line with the Learning Outcomes and Core Themes outlined in the PSHE Association [Programme of Study](#).

5. Chiwa's World

L3. about the relationship between rights and responsibilities

L4. the importance of having compassion towards others; shared responsibilities we all have for caring for other people and living things; how to show care and concern for others

L5. ways of carrying out shared responsibilities for protecting the environment in school and at home; how everyday choices can affect the environment (e.g. reducing, reusing, recycling; food choices)

L19. that people's spending decisions can affect others and the environment (e.g. Fair trade, buying single-use plastics, or giving to charity)

I can explain what climate change is and how it affects people's lives as well as identify what I can do to help.



6. Charity for Chiwa

L3. about the relationship between rights and responsibilities

L4. the importance of having compassion towards others; shared responsibilities we all have for caring for other people and living things; how to show care and concern for others

L5. ways of carrying out shared responsibilities for protecting the environment in school and at home; how everyday choices can affect the environment (e.g. reducing, reusing, recycling; food choices)

L7. to value the different contributions that people and groups make to the community

I can identify different organisations that help people in different countries who are in challenging situations and can explain how they do this.

- Laptops - one per small group

